

CERTIFICATE OF LOCATION OF GOVERNMENT CORNER

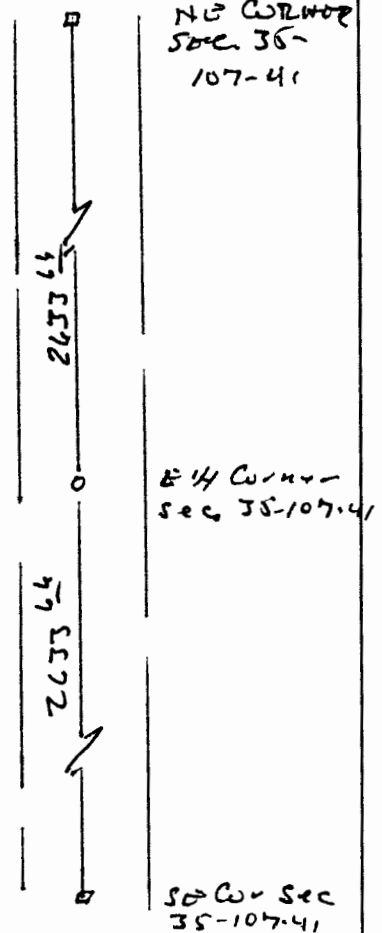
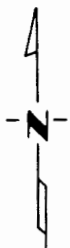
East Quarter _____ Corner of Section 35, Township 107, Range 41, 5th P.M.

STATE OF MINNESOTA, County of Murray

At the corner location shown on the sketch:

- On _____ found a _____
DATE
- left monument as found, lowered monument, removed monument (explain)
- On June 17, 1995 placed a 5/8" iron stake w/seal #11943 midway/on line. There
DATE is no record or evidence of a corner being set or established.

SKETCH OF REFERENCE TIES



Statement of evidence relative to this corner location is on back of page.

I hereby certify that this document and the data contained herein was prepared by me or under my direct supervision.

R. C. Mooney 6-26-95
SIGNATURE DATE

Registration No. 11943

- Land Surveyor, Professional Engineer
- County Surveyor, County Engineer

OFFICE OF THE COUNTY RECORDER

County of _____

I hereby certify that this document was filed in the Co. Recorders office at _____ .M. on the _____ day of _____ A.D., 19 _____

County Recorder _____

By _____, Deputy

DOCUMENT NO. _____